

## Technical data at a glance

CB 1	
<b>Technical Data</b>	
Washing height (mm)	2300 / 2500 / 2800
Washing width (mm)	2300
Plant height (mm)	3100 / 3300 / 3600
Plant width (mm)	3500 / 4260 <sup>1)</sup>
Building dimensions:	
- Minimum width (mm)	4500 / 5360 <sup>1)</sup>
- Minimum height (mm)	3200 / 3400 / 3700
- Minimum length (mm) (6.2m vehicle)	9660 <sup>2)</sup>
Water supply (max.)	100 l/min at 4-6 bar flow pressure
Compressed air supply	300 l/min at 6-8 bar
Power consumption:	
- with dryer and hot wax (kW)	16
- with dryer, high pressure (16/60 bar) and hot wax (kW)	max. 25
<b>Features</b>	
Brushes (optionally)	PE/Carlite
Drying	Roof contour/side
High pressure	Side high pressure, max. 1.30 m
Throughput (vehicles/h)	8 – 12
Centre overlap	●
Frequency-controlled drive motors	●
Frequency-controlled lift motors	●

<sup>1)</sup>With side splash guard

<sup>2)</sup>With safety switch



**Recycling washing water with ARS and ARO**

- Saves up to 85% of fresh water
- Effectively avoids odours
- Minimum of service required
- Operates fully automatically
- Simple installation
- Modular construction

	ARS	ARO
Water throughput, max. (l/h)	10000	10000
Power supply (Ph/V/Hz)	3/400/50	3/400/50
Power consumption (kW)	2.8	4.0
Break tank capacity (l)	1000	1000
Deodorization	RM 851	ozone

**Cleaning agents for the CB line: newly formulated**

Product	Application	Size of pack	Order No.
RM 803 ASF pre-wash	Pre-spraying	25 l / 200 l	6.294-454 / 6.294-455
RM 811 ASF active wash	Main wash	25 l / 200 l	6.294-462 / 6.294-463
RM 812 ASF active foam	Foam wash	25 l / 200 l	6.294-464 / 6.294-465
RM 824 ASF super pearl wax	Drying	25 l / 200 l	6.294-470 / 6.294-471
RM 829 ASF drying aid	Drying/conditioning	25 l / 200 l	6.294-473 / 6.294-474

**improved formulas**

**Please contact us for more information:**

**Head Office Germany**  
 Alfred Kärcher GmbH & Co.KG  
 Alfred-Kärcher-Str. 28 – 40  
 71364 Winnenden  
 Tel. +49-7195-14-0  
 Fax +49-7195-14-2212  
 www.kaercher.com

**United Kingdom**  
 Kärcher (UK) Ltd  
 Beaumont Road  
 Banbury  
 Oxon OX16 1TB  
 Tel. +44-1295-752-100  
 Fax +44-1295-752-103  
 www.karcher.co.uk

**Regional Head Office Asia-Pacific**  
 Kärcher Asia-Pacific Pte Ltd  
 5 Toh Guan Road East,  
 #01-00 Freight Links  
 Express Distripark,  
 Singapore 608831  
 Tel. 65-68971811  
 Fax 65-68971611  
 www.karcher.com.sg

**Australia**  
 Kärcher Pty. Ltd.  
 40 Koornang Road  
 Scoresby VIC 3179  
 Victoria  
 Tel. + 61-3-9765-2300  
 Fax + 61-3-9765-2399  
 www.karcher.com.au

**South Africa**  
 Kärcher (Pty) Ltd  
 144 Kuschke Street  
 Meadowdale 1614  
 P.O. Box 118 18  
 Vorna Valley 1686  
 Tel. +27-11-574-5360  
 Fax +27-11-454-4682

**Ireland**  
 Kärcher Ltd (Ireland)  
 12 Willow Business Park  
 Nangor Road  
 Dublin 12  
 Tel. +353-1-409-7777  
 Fax +353-1-409-7775

**Hong Kong**  
 Kärcher Limited  
 Unit 10, 17/F, APEC Plaza  
 49 Hoi Yuen Rd.,  
 Kwun Tong, KLN  
 Tel. +852-2-357-5863  
 Fax +852-2-357-5632  
 www.karcher.com.hk

**New Zealand**  
 Kärcher Limited  
 East Tamaki  
 Auckland  
 Tel. +64-9-274-4603  
 Fax +64-9-274-5609  
 www.karcher.co.nz

**United Arab Emirates**  
 Kärcher FZE  
 RA 8, XB 1  
 P.O. Box 17416  
 Jebel Ali Free Zone  
 Dubai  
 Tel. +971-4-8836-776  
 Fax +971-4-8836-656  
 www.kaercher.com

Attractive design, robust engineering, excellent cleaning and drying results.



Po. 02/05 · Order No. 0.018-894 · Printed in Germany on paper bleached without chlorine. Specifications subject to change without prior notice.



# The CB line – efficient, operator-friendly, innovative

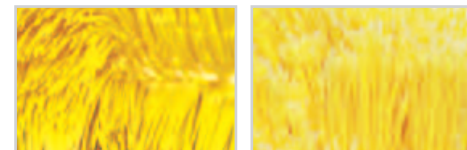
The Kärcher CB line of vehicle washes is an attractive proposition for car dealers, filling stations, wash centres, hotels and supermarkets. They feature simple and robust technology to keep maintenance and operating costs to a minimum. An intelligent software concept ensures easy installation and operation. A smart exterior with quality LED traffic light for user guidance makes it a wash with maximum customer appeal.

## CB line standard features:

- LED traffic light (on left)
- Washing symbols for basic and additional programmes
- Foaming
- Wheel wash with contra-rotating brushes
- 3-brush wash with contra-rotating brushes
- Contour-guided roof dryer
- Side dryers
- Frequency controlled travel and lift functions

## Optional extras:

- Second LED traffic light (right)
- Underbody wash
- Antifreeze system
- Safety switches (for narrow/short washing bay)
- High-pressure side pre-wash
- Polyethylene or Carlite brushes
- Hot wax
- Design packages with lighting
- Water treatment
- Payment systems



Carlite

PE brush



## Safe and reliable in operation, attractive appearance – maximum customer benefits

- Big **LED traffic light** for positioning vehicle
- Pictograms show **current phase of washing cycle** (lighting optional)
- **High capacity dryer-blower unit** for best possible results
- **Gentle application of active foam** for removing insects and grime
- Kärcher high-pressure pre-wash with Kärcher power nozzles for **effectively removing loose dirt and ensuring maximum paintwork protection**

- Frequency-controlled travel and lift motors for **gentle-action washing cycle**
- High quality LED traffic light provides **attractive and friendly appearance** for wash customers
- **Colour scheme does not show dirt**, and plastic panels are easily washed
- **Wheel wash with alternating direction of rotation** for best possible results
- Interface ready for reporting malfunctions, via **CAN-bus system**, to mobile phone, PC or via Internet

## Operator-friendly technology

- **Switchgear cabinet** is mounted on the **gantry** (saves space and is service-friendly)
- **Large cleaning agent containers** for long periods of operation without re-filling
- Accessible from three sides for **ease of servicing**
- **Maintenance-free direct drive** for side brush feed

## Kärcher cleaning agents – effective and environmentally friendly

The new cleaning agents formulated specifically for Kärcher gantry washes feature:

- Improved cleaning performance
- Intensive, modern fragrances
- Special ingredients to make brushes glide more smoothly
- New surfactants help self-cleaning action of brushes



See back page for order numbers and pack sizes

- **Maintenance-free belt drive** for lifting movement
- High-quality **canned motors** ensure long service life
- Simple, low-maintenance technology **keeps servicing costs low**
- **Easy changeover** from polyethylene to Carlite brushes without any mechanical modifications
- **Maintenance-free bearings** and guides
- **Frame is hot galvanized** and powder coated. Highly stressed parts made of **stainless steel**
- Maximum washing length in minimum building length (9.66 m to wash vehicle of 6.20 m)

